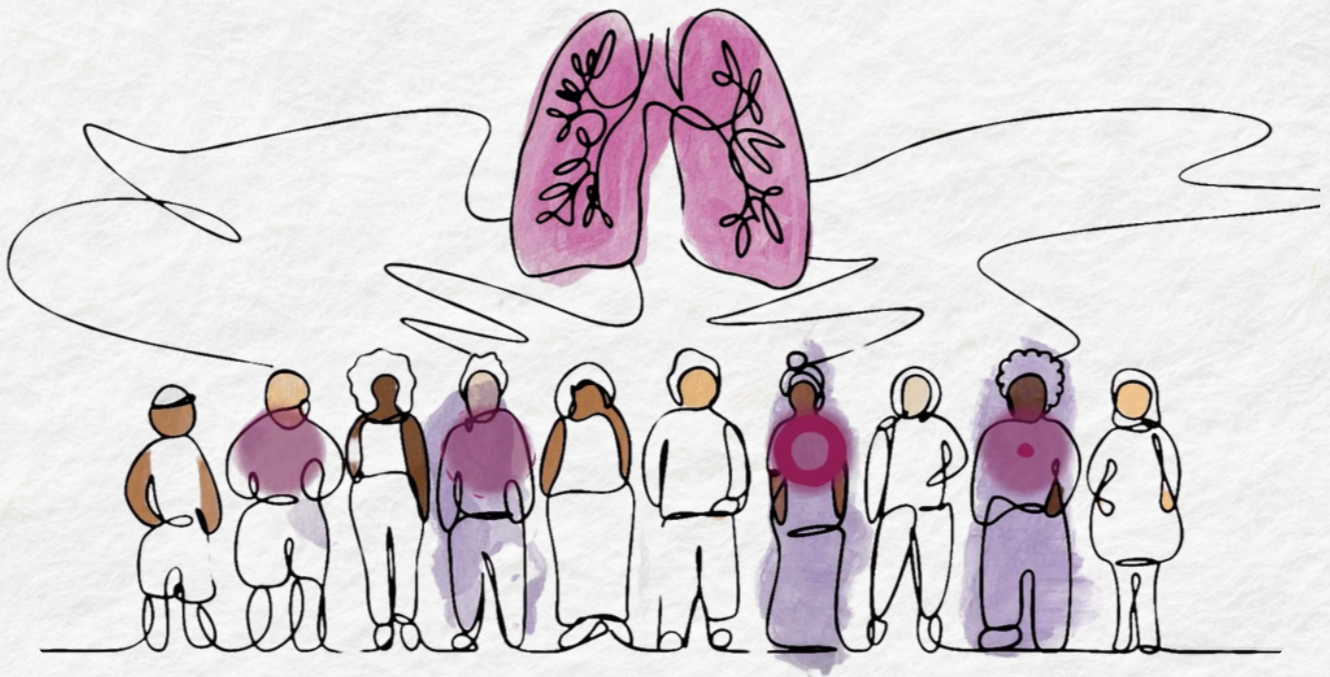


**Lung conditions can  
affect anyone, but people on  
probation can have worse  
health outcomes than others**



# **ARE YOU LOOKING AFTER YOUR LUNGS?**

**Find out more  
about being on  
probation and  
good lung  
health**



**Find out more  
about lung health  
on the NHS  
website**



**[www.nhs.uk](http://www.nhs.uk)**

