



**Bradford  
and Craven  
Autism AIM**

**The  
Advonet  
Group**

Providing Independent Advocacy

# Bradford and Craven Autism AIM

**We offer one-to-one peer support, help to access GP services and mental health peer support groups for autistic adults living in Bradford, Airedale and Wharfedale and Craven**



**We are funded by grants from:**

**Bradford District and Craven  
Health and Care Partnership**



**West Yorkshire  
Health and Care Partnership**



# About us

Bradford and Craven Autism AIM is a free service co-led by and run for autistic adults aged 18 and over who:

- Live in or are registered with a GP in Bradford, Craven and Airedale and Wharfedale
- Are diagnosed as autistic
- Receive little or no funded support for social care

We have a staff team including several autistic people delivering one-to-one support and facilitating groups.

We are part of The Advonet Group, an independent advocacy charity working across West Yorkshire.

## Our Services



### Autism Health Access Project

Support to help autistic adults access GP services and communicate their health needs, as well as one-to-one peer support.



### One-to-one Peer Support

One-to-one peer support for up to four sessions per year, provided by one of our Peer Development Workers.



### Mental Health Peer Support Groups

Yorkshire Autism AIM runs mental health-focused peer support groups by and for autistic adults, in-person and online.

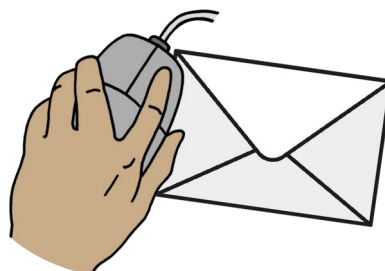
## Contact us

### Make a Referral



Refer to us online at [tinyurl.com/bradfordaimref](https://tinyurl.com/bradfordaimref)

### Email us



Email [bradfordautismaim@advonet.org.uk](mailto:bradfordautismaim@advonet.org.uk)

### Visit our website



Learn more about us at [bradfordautismaim.org.uk](https://bradfordautismaim.org.uk)