

## NEW INFECTION CONTROL AND TESTING FUND GUIDANCE PUBLISHED

The Department of Health and Social Care has published guidance on the new Infection Control and Testing Fund for England, which has been consolidated and extended until June 2021, with an extra £341 million of funding

Administrative costs of vaccination and testing have been included in the new conditions; funding can be used for lateral flow device (LFD) testing for extra-care and supported living services, when required to do so (funding is at Councils' discretion).

You can find further information [HERE](#)

## EU SETTLEMENT SCHEME

The EU settlement scheme is still open to applications but the deadline of 30 June 2021 is fast approaching. It is up to individuals and not employers to submit applications to the scheme.

More information can be found using this [LINK](#)

## COVID-19 SUPPORT TEAM WEEKLY VLOG

The latest instalment of the series is available [HERE](#)

## TISSUE VIABILITY TRAINING: REACT TO RED

React to Red training supports knowledge around all aspects of pressure ulcer prevention.

For more information on the training sessions please view the flyer on the [Provider Zone](#)

## STAFF ENGAGEMENT SESSIONS

The Covid-19 Support Team have partnered with Bradford Teaching Hospitals to bring you a series of engagement sessions for any staff that feel hesitant about receiving a vaccine. Initially, we are reaching out to those providers who are reporting a staff vaccine uptake that is lower than 50%. Sessions will be hosted on Microsoft Teams and will offer an opportunity for your staff to submit questions and concerns to a number of clinical professionals that have agreed to take part to create a session tailored specifically for your staff.

We hope to offer other types of sessions for you and your staff soon. We will keep you up to date on what is on offer as this progresses.

If vaccine hesitancy is an issue within your staff please contact the Covid-19 Support Team for some support 01274 431999

### BRADFORD CARE HOME RESOURCE PACK – UPDATED 07 APRIL 2021

Click [HERE](#) to access!

This guide is designed to complement and not replace local guidance and professional judgement and is a live document which will be updated at least fortnightly, to align with other national and regional guidance.

To provide feedback, report inaccuracies or to provide updates on this pack please contact:

[Covid19SupportTeam@bradford.gov.uk](mailto:Covid19SupportTeam@bradford.gov.uk)

### BRADFORD HOME SUPPORT RESOURCE PACK – UPDATED 07 APRIL 2021

Click [HERE](#) to access!

This guide is designed to complement and not replace local guidance and professional judgement and is a live document which will be updated at least fortnightly, to align with other national and regional guidance.

To provide feedback, report inaccuracies or to provide updates on this pack please contact:

[Covid19SupportTeam@bradford.gov.uk](mailto:Covid19SupportTeam@bradford.gov.uk)

**STAY SAFE, MAKE SPACE  
AND VENTILATE**



## THE HUBBLE PROJECT: HELP ON YOUR TECH-ENABLED CARE JOURNEY

The use of technology-enabled care (TEC) has increased rapidly during the coronavirus pandemic. However, not all care providers feel able to take advantage of technology.

[The Hubble Project](#) – developed by the National Care Forum (NCF) with funding from NHS Digital's Digital Pathfinders Programme - enables care providers to learn from others who have introduced technology.

Based on a series of virtual visits to three innovative care providers, NCF and Digital Social Care have published a series of films, information packs, templates and guides.

For example, unobtrusive monitoring systems and circadian rhythm lighting, aligned to our natural body clock, are enabling residents at Parkhaven Trust's specialist dementia care home, The Beeches, to get a better night's sleep – improving their quality of life, and helping them to be more active during the day. And it is freeing up night staff to focus on those in most need of support.

NCF is encouraging everyone in the care sector to play their part in supporting the effective use of technology – including commissioners in terms of ambitions and funding, and policy makers in terms of ensuring TEC-enabled care is a core element of the Social Care White Paper.

To find out more you can read NCF's press release [HERE](#).  
You can also access The Hubble Project resources using this [LINK](#)

Help stop the spread of COVID-19



# GUIDANCE UPDATES

You can search for all guidance on the government website using this [LINK](#)

## 1) **CARE HOME VISITING** – Updated 6 April 2021

Updated 'Guidance on care home visiting', 'Summary of guidance for visitors' and 'Visiting arrangements: one-page overview' to reflect that from 12 April, each care home resident can name up to 2 people who can come for regular indoor visits. In the 'Guidance on care home visiting', updated the section on essential care givers and added a new section on visits involving children and young people aged under 18. Available to view [HERE](#)

## 2) **VISITS OUT OF THE CARE HOME** – Updated 7 April 2021

Updated to include more information about steps that should be taken to reduce the risks around a visit out of the care home. Available to view [HERE](#)

## 3) **VISITING SL** – Updated 30 March 2021

Updated 'COVID-19: guidance for supported living' to replace the 'Visitors and support bubbles' section with the new 'Visits in and out of supported living settings' section. Available to view [HERE](#)

## 4) **SOCIAL DISTANCING AND RISK ASSESSMENTS** – Updated 7 April 2021

Latest update on Social Distancing and Risk Assessments. Available to view [HERE](#)

## 5) **PPE** – Updated 6 April 2021

Introduced recommendations to change PPE after each episode of personal care, and new recommendations around use of eye protection when delivering personal care within 2 metres. Guidance provided in HTML format only available to download

## 6) **PPE** – Updated 1 April 2021

Updated 'Coronavirus (COVID-19): provision of home care' to reflect that free COVID-19 PPE provision for health and social workers has been extended to March 2022.

You can view guidance on how to order PPE [HERE](#) and guidance on PPE for domiciliary care workers [HERE](#)

## 7) **TESTING** – Updated 1 April 2021

Added links to the Be My Eyes app for help registering and taking a test and added links to new pages on testing in adult care homes and in all adult social care settings. Available to view [HERE](#)

## 8) **HOW TO WORK SAFELY IN CARE HOMES** – Updated 6 April 2021

Available to view [HERE](#)

## 9) **PROVIDING HOME CARE** – Updated 1 April 2021

Available to view [HERE](#)

## DATA FOR THE SOCIAL CARE SECTOR IN BRADFORD

	Latest	Change
Deaths	0	0
Infections	10	-2
Outbreaks	10	-4
Occupancy	74%	+1%
Care Home Tracker Completed	96%	-3%
Home Support Tracker Completed	78%	N/A

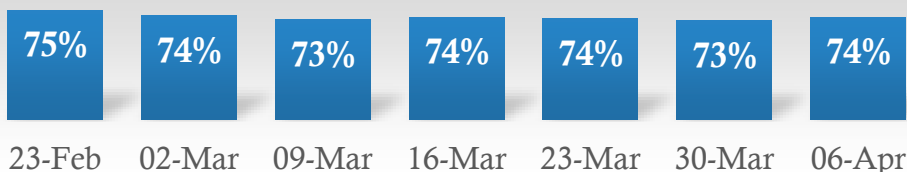
### HOME SUPPORT PLACEMENTS (last 7 days)

Total Placements	Locality Providers	Other Providers
24	20	4

### CARE HOME VACANCY DETAILS (last 7 days, both Residential and Nursing).

PERCENTAGE OCCUPIED	NUMBER OF HOMES
Under 70%	27
71% to 85%	34
86%+ Occupied	41

### Bradford Care Home Occupancy Rate

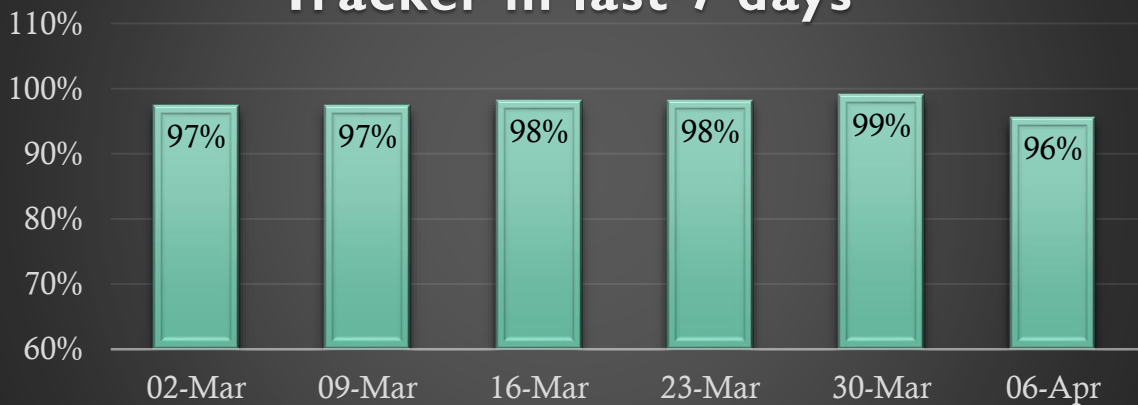




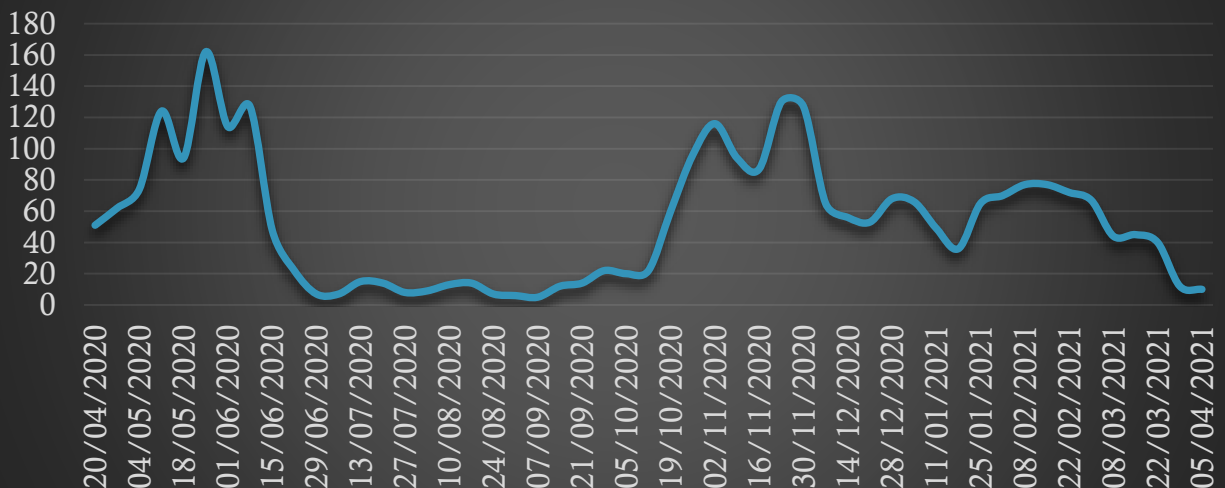
## Bradford Care Homes with a Covid-19 Outbreak



## Bradford Care Home Completed Tracker in last 7 days



## Number of Covid-19 Infections



# BCA UPDATES

WEEKLY UPDATES FROM BCA

## Digital Security Protection Toolkit

The DSPT is a useful guide and a free self-assessment tool that can help your organisation keep people's confidential information safe. There are 44 questions to the toolkit and once complete, it can help an organisation to demonstrate that they meet CQC expectations of good data security practice. The DSPT helps to evidence how you are protecting your organisation from and risk to cyber-attacks or breaches.

BCA will offer as much support as you need through webinars, workshops or 1 to 1 sessions and will work around what support works best or you.

At the moment we are just asking you to register your organisation. To register please [CLICK HERE](#) and then press the top right 'register' button when directed to the NHS Digital website

If you have problems or queries please email [admin@bradfordcareassociation.org](mailto:admin@bradfordcareassociation.org)

## Care Sector - Living Well Event Resource Pack!

The BCA hosted a Living Well Event, on Thursday 25th March. The event focused on the general well-being, health and recovery of the people you support.

If you missed the event, don't worry, you can access the Event Resource Pack that includes all slides, recordings, training links, training packages and contact details. [CLICK HERE](#) to access the Resource Pack

### Topics Included:

- Frailty
- Nutrition
- Vitamin D Supplement
- Tissue Viability
- Long Covid
- Activities coordinator group
- Health + Wellbeing Boost Week
- Mental Health Training for Staff



**OUR MEMBERS FACEBOOK PAGE IS LIVE! CLICK HERE TO ACCESS THE PAGE**

## REGISTERED MANAGERS WHATSAPP GROUP

It is an opportunity to link with others so we can learn from each other's experiences, share good practice and importantly contribute to shaping how the sector collectively responds to our new normal. The invitation is open to all Registered and Senior Managers.

**SEND YOUR NUMBER, NAME AND ORGANISATION TO 07807799456 TO JOIN!**

## BCA MEETINGS + ZOOM INFO

You can access all BCA's Meetings using the Zoom information below:

Meeting ID: 933 772 1608  
Password: Bradford20

Provider Update - Tuesday 10:30-11:30

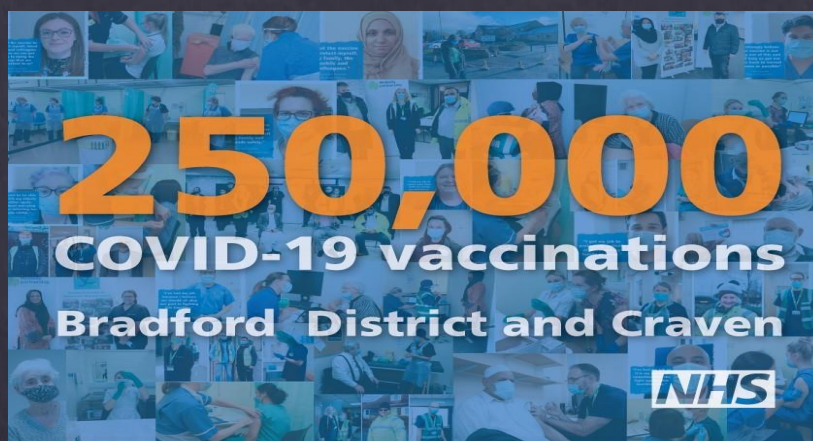
IPC Meeting - Tuesday 10:30 - 11:30

\*Please note the Provider Update and IPC run alternative to each other\*

Registered Managers Reference Meeting - takes place on the third Wednesday of every month 15:30 - 16:30

# BCA MEETING SCHEDULE

Meeting	Date	Time
IPC Update	Tues, 13 April	10:30 – 11:30
Provider Update	Tues, 20 April	10:30 – 11:30
Quality Workshop – Part 1 - CQC	Wed, 21 April	13:30 – 16:00
IPC Update	Tues, 27 April	10:30 – 11:30



Buildings across Bradford district and Craven were lit up blue on Wednesday 7 April 2021 to celebrate a key milestone in the local COVID-19 vaccination programme as 250,000 local people have now received their first dose.

Thanks to the efforts of staff and volunteers at vaccination sites across the area, over a quarter of a million people have moved a step closer to being protected against coronavirus and returning to the things they love.

Thank you as well to our residents for their patience and for taking up the opportunity to get vaccinated which has helped with the smooth roll out of the programme.

**People who have had the vaccine are reminded that they still need to follow national Government guidance to protect both themselves and others from COVID-19.**