

Career Development Awards Informational Webinar

Presentations and recording will start at 2.05pm

Welcome!



1

Mission and principles of the
School for Social Care Research

2

Key funding details

3

Eligibility criteria and who
can apply

4

Application timelines

5

Live Q&A

1

This session will be recorded and shared with attendees afterwards along with the slides.

2

Use the Q&A function to pose questions as they occur – you don't need to wait until the end to ask.

3

Any questions we can't cover today will be uploaded to the FAQs on our website.

The School for Social Care Research - our mission



One of three national research schools funded by the National Institute of Health and Care Research.

Funded since 2009, our mission is to **develop the evidence base to inform and improve adult social care practice in England**. We do this by commissioning and conducting internationally leading research.

We are a partnership between 7 universities and have been led by the University of York since May 2024.



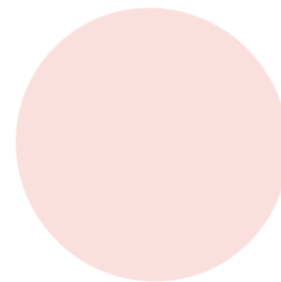
Research excellence is at the heart of what we do, supported by our commitment to co-production, EDI and capacity building.

We want to equip practitioners and researchers with the tools to build a long-term career in social care research.

Read more about our research at sscr.nihr.ac.uk/research/



**Research Career
Development Awards
- Round 2 now open!**





Opportunity to undertake personalised **training and development activities** in social care research.



Aimed at building capacity across the entire social care research workforce – open to social care practitioners or academics at **all** levels, plus people working in an aligned sector or discipline.



Apply for between £25,000 - £75,000 to undertake each award.



Awards can be used for salary costs for time spent undertaking your award, training fees, opportunities and activities, plus direct costs needed to carry out your development plans.

Our remit might be broad but **each award is personal**. We want to know what you need to do to reach the next stage of your social care research career and how a CDA will make that happen.

Training and development isn't limited to traditional or desk-based courses. This award can fund activities like:

Exploratory or pump-priming
activities for future research



Leading a small-scale research
project or feasibility study

**Time to develop plans or a
person** for a future research
or fellowship bid



Network-building activities
with academics, practitioners or
other stakeholders

Spending time in different
practice or policy settings



And it can also include fees for
courses to **improve research
skills and knowledge**

Applications will likely have a mixture of different training and development activities, but they will be linked by a common thread - **how they will help you reach your social care research career goals**



We will fund:

- Salary buyout
- Training courses or modules
- Travel for networking
- Costs associated with small-scale research (like fees for interview participants, transcription costs, systematic or scoping reviews)



We won't fund:

- Research projects with no clear personal development plan
- PhD fees or stipends
- Costs for things you have access to in your day job
- International travel or conference attendance

A more detailed list is available on our website - if in doubt please email sscr-training@york.ac.uk and we can advise.

This funding is **not** just for doing research — small-scale research activities are eligible where they are clearly linked to a training goal.

Career development and training should be woven throughout your application. We want you to tell us:



1

Where you
are in your
career

2

Where you
want to be in
the future

3

What activities
will help you
get there

4

How you will use
this award to do
this.

There are lots of reasons to apply for a CDA!
Alongside your award plans, this opportunity provides:

A peer support network awardees
and community of alumni

1:1 mentorship with your career
development supporter

Membership to NIHR Academy

Support and opportunities from the SSCR
Career Development Team

Links to the wider SSCR research
community

Time and resources to focus on your
continued professional development

Who is this opportunity for?



We are welcoming applications from...



Social care **practitioners**
and **practitioner-**
researchers



Social care **researchers**
working at any career stage



Researchers working in
an **aligned sector or**
discipline who wish to
pivot into social care



Eligible applicants **must**:

- Have a contract of employment somewhere that can receive funding awards (e.g. a university, policy unit, local authority, etc.). We can't make awards to individual people
- Have agreement and support from their line manager
- Include an appropriate academic career development supporter named in their application

Applicants also **don't need** to have:

- Particular qualifications (like a masters or PhD)
- Extensive (or any) research experience
- Successfully received grant funding in the past
- Grand or over-complicated plans - if you need something simple, that's perfectly valid

Remember to link your award with the overarching themes of the SSCR

Ensure your career development goals are woven throughout your award plans

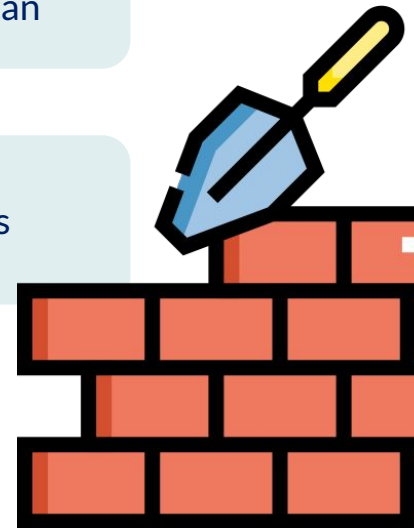
Work with your academic career development supporter and line manager to develop your application

Have discussions with your line manager/organisation early if you can

Get advice and guidance from the Research Support Service

Complete **all** supporting documents

Send completed application forms and your supporting documents to sscr-training@york.ac.uk by **5pm Thursday 25th September 2025**.



Upcoming timelines



Jul
2025

Informational webinars run - practitioner
and ECR focused sessions coming up

Submit completed applications by
5pm 25 September 2025

Sept
2025

Oct -Nov
2025

Applications are reviewed by panel,
which meets in mid-November

Outcomes shared with applicants within
2 weeks

Dec
2025

Jan - Feb
2026

Contracting begins between host
organisation and SSCR

Successful awards begin by 1st May
2026

Mar - May
2026

2021-2023

A number of CDAs were awarded in the last phase of the School.

Visit our alumni webpage to read more.



2024

Round 1

Our first round of funding closed earlier this year, where we awarded 4 CDAs.

2025

Round 2

Our second round launched June 2025.

2026

Round 3

A third round of funding will open in Summer 2026.

Some questions we've had so far



Q: Do researchers need to be based at a university or will salary backfill allow for other organisations?

Answer:

No - applicants need to be based in an organisation which can receive funding, but this does not need to be a university.

Answer:

Yes, and this opportunity could be used to help them reach a point where they can apply for leadership positions or funding. This award is open to any career stage.

Q: Are mid-career researchers eligible? How would this award benefit them?

Open Q&A

Please use the Q&A function to ask your burning questions!

Any that we're not able to answer here will be uploaded to the FAQs on the funding webpage.



1

Join our next
webinars:

- Practitioner-focused webinar (10th July)
- ECR-focused webinar (15th July)

2

Get in touch with the
RSS for support and
advice via the QR
code below



3

Send any further
questions and
completed
applications to
**[sscr-training@york.
ac.uk](mailto:sscr-training@york.ac.uk)**

Thank you for joining us

Good luck with your application!