



# **BCA MEMBERSHIP 2024 - 2025**

BRADFORD CARE ASSOCIATION -  
UNITED, WE MAKE A DIFFERENCE

**JOIN NOW AND ENJOY FREE  
MEMBERSHIP FOR 2024/2025**



**join us**

### **Fantastic News BCA FREE Membership Extended for Another 12 Months!!!!**

We are really pleased to be able to continue to offer free BCA membership to all care providers for 2024/2025, due to the funding support from Bradford MDC and our partners. The BCA fully understand and appreciate all the pressures providers are facing at the moment, both financial and operational, so we don't want to place any extra burden's on you at this time.

We will continue to fight for the care sector at a local, regional and national level, working together alongside providers and system partners, to develop and share best practice across the sector, building on the work already undertaken in previous years.

BCA members have already demonstrated what can be achieved and the challenges we can overcome working together, and we must continue to support each other in year ahead.

**Please take a moment to join the BCA and help to ensure the sustainable and thriving Bradford care sector of the future.**

**Find out more on the next page**



# HOW TO BECOME A MEMBER

If you would like to become a BCA Member for free and start enjoying the benefits today, simply complete our short **Membership Form (CLICK HERE)**.

***Please complete the membership form for each CQC registered location.***

# ALREADY A MEMBER? RENEW YOUR MEMBERSHIP

If you would like to renew your BCA membership to for free and continue to enjoy the benefits, simply complete our short **Membership Form (CLICK HERE)**.

***Please complete the membership form for each CQC registered location.***

**Following completion of the membership form we will send all members a Welcome Pack and Certificate.**



*"The BCA listens to everyone and makes members feel equal and a valuable part of the team. It also plays an important role in funding negotiations and legislative changes."*

## Our BCA Partners

Access to members only special discounted prices from our BCA Partners such as Person- Centred Software and Hempsons. **Find out more about all our partners below:**



## Benefits for members

- Advice, guidance and information on best practice, including training and development initiatives, free quality workshops and associated resource packs,
- Informative tools and best-practice documents to support providers with assessments and inspections including the CQC Provider Information Return (PIR) Workbook.
- Opportunities for members to participate and be involved in a variety of projects designed to help providers improve sustainability, effectiveness and efficiency and enhance the quality of service provision.
- Training, support and direction on funding and grants as well as DSPT and GDPR compliance support and advice.
- Advice and support in attracting, employing and retaining a high-quality workforce through events and campaigns, incentives and value based recruitment, including international recruitment and Bradford Cares Recruitment Portal.
- Access to a wide range of learning and development programmes, vocational qualifications, digital e-learning modules, webinars and specialist training courses from a variety of partners and organisations, including Skills for Care, Digital Care Hub, Better Security, Better Care and the Institute of Health & Social Care Management.
- Access to resources to help employee health and well-being.
- Access to an insightful monthly newsletter, local care provider networks and a dedicated WhatsApp group for managers, enabling the exchange of ideas and co-operation between members.
- Direct access to leaders within central government, local authorities, the CQC, the CCG, NHS and ICS.
- Working in collaboration with local, regional, and national organisations and care associations to drive change and innovation within the adult social care sector.
- Demonstrates to CQC a provider's commitment to quality of care, sharing of best practice, local engagement, and continuous improvement.
- Specialist discounted training and leadership development programmes and support.
- Procedural support and guidance on vaccinations, medication, falls, dementia and hospital admissions and discharges.
- Access to members only special discounted prices and offers for a variety of services from a wide range of suppliers and BCA partners, including telephone helplines for legal, HR and health & safety advice relating to health and social care.

Hempsons is delighted to be a platinum partner of BCA. We offer comprehensive and expert legal support to BCA members who face sector-specific challenges. With our deep understanding of your market and environment and our experience dealing with similar issues for others, we're ready to help you get the right outcomes efficiently and effectively.

## Discounted rates for BCA Members :

**BCA members benefit from approx. 20% off Hempsons standards rates.**

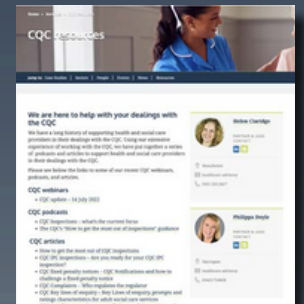
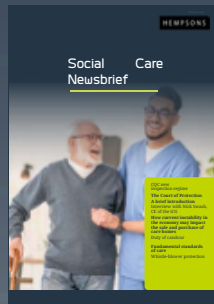
BCA members are eligible for a free 30-minute consultation with a Hempsons solicitor on any legal query connected to health and social care (limited to one topic per call). Call **01423 724056** asking for the social care advice line, stating that you are a BCA member. Alternatively, you can email **socialcare@hempsons.co.uk**



## Hempsons expertise

- charity law
- commercial property
- community care law
- contracts
- corporate law
- CQC regulatory
- data protection and security
- disputes and litigation
- employment law
- fundraising
- health and safety
- inquests and coroners
- judicial review
- mental health law
- safeguarding
- tendering

We can help you stay up to date with a range of legal issues



*“I have used Hempsons for many years and continue to be impressed by their extensive knowledge and expertise in the sector. They have a friendly and approachable way of working and always provide really practical no nonsense advice, consistently achieve positive outcomes. Definitely my go to law firm, would highly recommend.”*

Andrew Luckett,  
Chief Executive New Concept Care and Nursing

## Contact us today!



Philippa Doyle  
Partner – health and social care advisory  
01423 724028  
p.doyle@hempsons.co.uk



# Health & Care Insurance



**Our specialist team of health and care insurance experts at TL Dallas have been working within the care sector for over 20 years and understand the unique challenges you face. With access to specialist insurers, we can provide a wide range of insurance and risk management options, covering all segments of the health and care industry.**

### Core Cover

- Building & contents
- Business interruption
- Employers' liability
- Legal expenses
- Loss of registration
- Medical malpractice & abuse
- Professional indemnity
- Public liability
- Residents' effects
- Terrorism

### Additional Cover

- Cyber
- Employee benefits\*
- Engineering inspection & breakdown
- Financial services\*
- Keyman insurance\*
- Management liability
- Motor and fleet
- Pensions\*
- Personal accident
- Risk management & CQC consultancy

\*TL Dallas Independent Financial Services Ltd can provide advice on those "Additional Covers"

### Claims Consultancy

We have an in-house consultancy service to review and advise, as well as providing expert assistance throughout the life of a claim be it virtually or in person.

- We take on the negotiation of your claim directly with your insurer or loss adjustors.
- We provide a second opinion on a repudiated or unsatisfactory claim outcome.

This means taking as much of the hassle away from you as we can and fighting for the best possible settlements.

**SPECIAL OFFER**

## BCA members offer:

### Consultancy

- We can offer a FREE independent review to Bradford Care Association members of their current insurance arrangements as well as FREE consultation throughout the year if you have any general enquiries or require any advice on anything insurance related.
- Expert advice from external partners relating to CQC guidance around preparing for upcoming inspections or recent inspections where action may be needed. Also, legal assistance for areas including the purchasing of new premises and acquisitions, changes to legislation, inquests, CQC and H&S investigations, data protection and employment disputes to ensure quality care can continue to be delivered.

### Webinars & Newsletters

- Expert advice on a variety of subjects and current affairs from both ourselves and a panel of external professionals around CQC guidance, risk management and H&S, safeguarding, staff retention and recruitment, immigration, underinsurance, change

**Call James on 07984 143885 or email [james.bright@tldallas.com](mailto:james.bright@tldallas.com)**

**Call Rico on 07984 143758 or email [rico.young@tldallas.com](mailto:rico.young@tldallas.com)**

**Scan the QR code or visit [www.tldallas.com/health-and-care-insurance](http://www.tldallas.com/health-and-care-insurance)**

Bradford • Belfast • Cumbria • Edinburgh • Falkirk • Glasgow • Holmfirth  
Lincolnshire • London • North Yorkshire • Shetland • Stockport

 Find us on LinkedIn, Twitter and Facebook

T L Dallas & Co. Limited. (registered in England No. 645405) | T L Dallas Independent Financial Services Ltd (registered in England No.2846397). Registered Offices: Dallas House, Low Moor, Bradford, BD12 0HF. Both companies are authorised and regulated by the Financial Conduct Authority.



At JTM Service we have 40 years' experience and we are the go-to company for the supply, installation, service and maintenance of commercial laundry equipment and dishwashers.



We provide an unrivalled service for maintenance and repairs, and we supply and install the latest high-performance commercial washing machines, tumble dryers, dishwashers and ironers.

We supply and service all major makes and models of commercial laundry equipment, and we are proud to be the Approved Miele Professional Partner for the region.



### Care Homes & Nursing Homes

We have extensive experience supporting Care and Nursing Homes and we understand the importance of having effective laundry and dishwashing equipment which deliver optimum performance and maximise hygiene and infection control, whilst minimising costs and ensuring compliance. That is why JTM Service is the ideal choice for all commercial laundry and warewashing equipment requirements in the Care sector.

[Click here](#) for more information

We offer range of:

- commercial washing machines
- tumble dryers
- ironers
- dishwashers

We supply all major makes and models, including:

- Miele
- Girbau
- Primus
- Smeg
- Alliance
- Speedqueen
- Electrolux.

### Special Offer to BCA Members

#### 20% Discount on:

- Planned Preventative Maintenance Visits (Annual Service visits) ([JTM Service Preventative Maintenance](#)).
- Annual Gas Safety Inspections ([JTM Service Gas Inspections](#)).
- Duct Cleaning ([JTM Service Duct Cleaning](#)).

**Free On Premises Laundry Audit for Hygiene and Infection Control.**

**Free On Premises Laundry Review for Cost and Energy Efficiency Savings.**



Want benefit from a great service, to save money, reduce downtime, improve infection control, ensure compliance, and work with a partner you can trust, please contact us at [info@jtmservice.co.uk](mailto:info@jtmservice.co.uk) or 0113 2572221.



# DJT SERVICES LTD

ELECTRICAL & REFURBISHMENT CONTRACTORS

At DJT Services our mission is to revolutionise the care home sector. We specialise in refurbishments and planned maintenance, bringing your homes to life.



At DJT we complete refurbishments of homes at full capacity, working out planned programmes of work with home managers to avoid disruption. We also work in very targeted ways, upgrading 'tired' bedrooms and en-suites quickly so that owners and operators can maximise rental returns.

We can review your existing lighting arrangements and offer a detailed report on reducing costs through electrical usage, with changeover to LED being a simple way to reduce electrical consumption.

We would like to offer all BCA members a **free energy survey** on your current lighting installations. All work undertaken by BCA members will receive a **15% discount** off the agreed price.

## WHAT WE ALSO OFFER

- Fire Extinguisher Servicing
- PAT Testing
- Emergency Lighting
- Fire Alarms
- Electrical Condition Reports

## CONTACT US



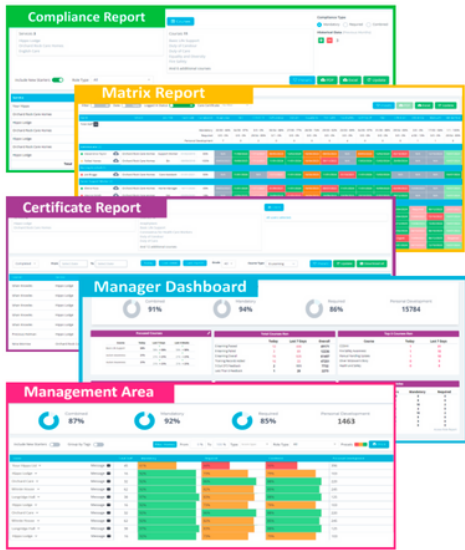
lucy@djt-services.co.uk  
dan@djt-services.co.uk



07384677760  
01274 752461



Visit our website  
www.djt-services.co.uk



# yourhippo

## The E-Learning Management System for the Care Sector

### Who are YourHippo?

Starting 7 years ago, **YourHippo** has become a multi award-winning **Care Training Platform** and **LMS** for the care sector with industry leading features, such as Compliance and Matrix Reports, a Care Certificate Management tool, and access to Management Statistics and Manager Dashboard. It will enable you to produce the all-important compliance statistics for your regulators at the touch of a button.

### Other features include...

- Extensive library of **Interactive Courses**
- Face to Face Training **Bookings** System
- Automated **Email Reminders** to Learners
- Ability to Upload your own **SCORM** Courses
- Average 6-minute **Support** response times
- **API** Functionality, and **SO MUCH MORE ...**

### Future Development

We pride ourselves in pushing new features on a monthly basis. In addition to our already cutting-edge functionality our road map includes, but not limited to, the ability to manage all your policies and procedures, supervision of records and observations. Not to mention the ever-increasing course library.



### BCA Members Exclusive Offer

As a member of the Bradford Care Association, the YourHippo system is available at a cost of £20 per active user (plus VAT) per year. Per Active user means you will not need to pay for new users just so long as the number of active users consistently remains the same throughout the year, making it even more cost effective for BCA members.



0161 871 7512



hello@yourhippo.com

yourhippo



Whether you're starting a care business or growing one, at Citation you'll find everything you need to help get your HR, Health & Safety and CQC compliance right. They enjoy deciphering thousands of pages of regulations, and finding affordable, intelligent solutions to keep compliance simple for businesses like yours and get you the highest possible regulatory rating.



## Who are Citation?

- 160+ HR professionals, barristers, solicitors, Health & Safety experts, and care industry experts here for you 24/7
- 25+ years supporting UK businesses
- 50,000+ brilliant clients
- Rated 'Excellent' by their clients on Trustpilot

**DON'T  
MISS OUT!**

**As a BCA member you can receive all of the below for a discounted rate:**

- **24/7 expert advice** – round-the-clock telephone access to expert HR and Health & Safety professionals.
- **Atlas online hub** – smart compliance technology to manage essential HR and Health & Safety tasks, training and documentation in one place.
- **Independent on-site support** – annual HR check-ins and site visits delivered by local consultants.
- **Advice so good, it's guaranteed** – as long as the advice given is followed Citation will defend against tribunal claims up to £1.5million a year.
- **Documentation, sorted** – policies, risk assessments and contracts covered by experts so members can focus on what they do best.
- **CQC Pro** – handy online tool to ace inspections and tick off regulatory obligations.
- **Care mock inspections** – mock inspections by Citation's professional team to avoid any surprises when the regulator comes to call.

**Kick things off with Citation today!!**

Get in touch with Citation to organise a free audit of your business and start saving time, stress and money. Simply **call 0345 844 1111** or visit **[citation.co.uk/care-industry](https://www.citation.co.uk/care-industry)** for more information. And don't forget to quote 'Bradford Care Association' when enquiring to access preferential rates.

# IMPAQT

F O R C A R E

**IMPAQT FOR CARE is an effective digital solution that drives robust governance, evidences compliance, supports service safety and quality, and demonstrates continuous improvement in Care Homes.**



Drives safe and quality care



Enables effective governance, compliance and continuous improvement



Facilitates streamlined internal and external reporting, required returns and notifications



Increases productivity thus releasing more time to care and manage the service

**The Integrated Management Performance And Quality Tool - IMPAQT FOR CARE has been developed and piloted in Bradford.**

- **IMPAQT FOR CARE** is a comprehensive digital solution to enable the Manager, Nominated Individual, Quality Lead and Leadership team to evidence (all in one place, collated and mapped to CQC's Key Questions and Quality Statements) that their service has robust governance in place, is well-led and meets all required standards.
- **IMPAQT FOR CARE** uses prompts, self-assessment audits, action plans and a range of reports to effectively monitor clients, staff and the service, to easily identify themes and trends, and to support reflective practice and continuous improvement.
- **IMPAQT FOR CARE** can improve productivity, releasing time to care, as collated information can be readily accessed, reporting can be done at the push of a button and duplication of recording is reduced.
- **IMPAQT FOR CARE** connects with other IT systems, including Person Centred Software (PCS), and Skills for Care's ASC-WDS to assist services in accessing Workforce Development Funding.



**BCA Members Special Offer!**

**15% discount on the usual cost.**

**SPECIAL OFFER**



**rachael@careimpaqt.org**



**07813 321570**



**We are a local, Bradford based IT & Cyber Essentials Certification Body that can ensure your business complies with UK legal cyber security requirements. Using the Cyber Essentials scheme, which is a government backed scheme, we can quickly get businesses up to a minimum accepted standard of IT security, which can comply with the NHS DSPT.**

**The goal is to enable you to have the basic levels of protection against cyber-attacks whilst improving business cyber security and reliability in the process.**

- Microsoft 365 & Microsoft Azure Help & Support
- Cyber Security Consultancy
- DSPT Help & Guidance
- 24/7 Monitoring of IT Systems
- Mobile Device Management
- Anti Virus / Anti Spyware / Anti Ransomware
- Microsoft Patch Management
- Web & Email Secure Content Filtering
- Cyber Essentials Certifications
- Security Awareness Training Solutions
- IT Support & Assistance
- Reliable WiFi Solutions
- Vulnerability Assessments
- Penetration Testing / Ethical Hacking
- Broadband, Phone Lines, Leased Lines
- Experience within your industry so we understand how you work.
- Lot of experience working with the GDPR, the ICO and the NHS DSPT.
- Strong partnerships with all the key IT and security vendors.



Check your IT



Get Certified



Anti-Virus



Online Backup



Mail security



Web Security

### Special Offer for Bradford Care Association Members

**Special OFFER**

**Quote BCA24**

- **A free of charge IT Support Helpline** – a free 30 minute call/remote support session on any IT or Cyber Security query.
- **15% discount** on Cyber Essentials Plus certification fees.
- **Discounted Consultancy Rate - 20% discount** on standard fees for pay as you go services.



**01274 924686**



**Info@itwiser.co.uk**

ITWiser LLP  
Bradford Chamber Business Park  
Bradford  
BD4 8BX

The BCA are delighted to announce that we have joined the **Institute of Health and Social Care Management**. This means that you and your teams have **FREE MEMBERSHIP** and access to all their content which includes:

➤ **Accredited Leadership training** such as High Performance Leadership, “How to” sessions, Short Courses, Deputy Manager Leadership Training for new and/or aspiring leaders, and many more!

➤ **Individual learner portal** – Every member can create their own user portal. This means you can use this portal to create and manage your professional development. This provides the opportunity of gaining Bronze, Silver or Gold awards.

➤ **Access to their special interest groups** such as Women in Leadership, Dementia, Frailty & Living with Long Term Care Conditions, EDI.

➤ **Resources to support your professional development**  
e.g. resources on Wellbeing for you as leader and for your team.

**DON'T  
MISS  
OUT!**

## How your workforce can join for free as a BCA Member?

### Who can join?

All BCA Members individual employees (includes all care and management staff) can join to access the benefits above.

[Click here to join!](#)



SCAN ME



...**DONT FORGET** to use the code **BDCA** to access your FREE membership or scan the QR code below.

**If you have any questions please contact Sue Jones (Director of Social Care.)  
sjones@ihm.org.uk**

## SUPPORTING YOU FINANCIALLY!

Bradford District Credit Union are pleased to be working with Bradford Care Association to offer savings and loans facilities!

Juggling your finances isn't always easy, especially when you've got a job that keeps you on your toes. That's why we work with local employers to make it a bit easier.

With our savings and loans offers, you would arrange to save via standing order and have an amount of your choice transferred from your bank account each month and put straight into your savings or towards the cost of your loan.

Importantly, saving money regularly helps protect you from unexpected financial pressures and helps you manage your money more effectively.



## WANT TO SAVE OR GET A LOAN?

### Save as you borrow

- This is a painless way to build up your own safety net, even when you're borrowing. Furthermore, regular savings makes it more likely we'll accept your loan application in the future.
- If you would like to save at the same time as repaying your loan, please request this during your loan application.

### Flexible Loans

- We make sure a loan from a credit union is affordable. And if your circumstances change, we are here to help you.



### BCA MEMBERS OFFER

Email [admin@bradfordcareassociation.org](mailto:admin@bradfordcareassociation.org)  
and request the Credit Union information flyer





# THE BUSINESS RESILIENCE CENTRE

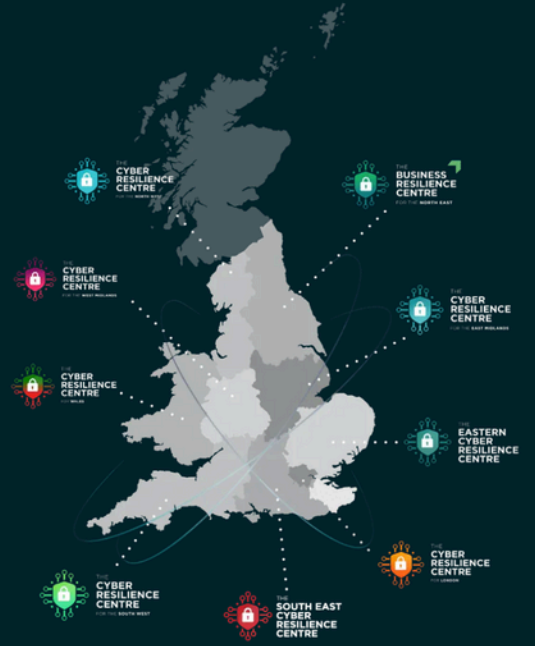
FOR THE NORTH EAST  
YORKSHIRE  
THE HUMBER

## Who are we?

Trusted - Not for Profit -  
Low Cost Cyber Security  
Services

Policing, Academia and Private  
Sector

Collaborating to protect small  
businesses from cybercrime



## BENEFITS OF CORE MEMBERSHIP

Monthly e-newsletter  
containing protection  
tips and guidance,  
and latest threat  
information

Networking links to  
police organisations



Welcome Pack,  
detailing our  
structure, services  
and support options

Cyber Health Check

Additional  
online crime  
prevention  
resources

# BCA MEMBERS BENEFITS & OFFER

## JOIN THE NEBRC FOR FREE!



@NEBRCentre



enquiries@nebrcentre.co.uk



@NorthEastBusinessResilienceCentre

