

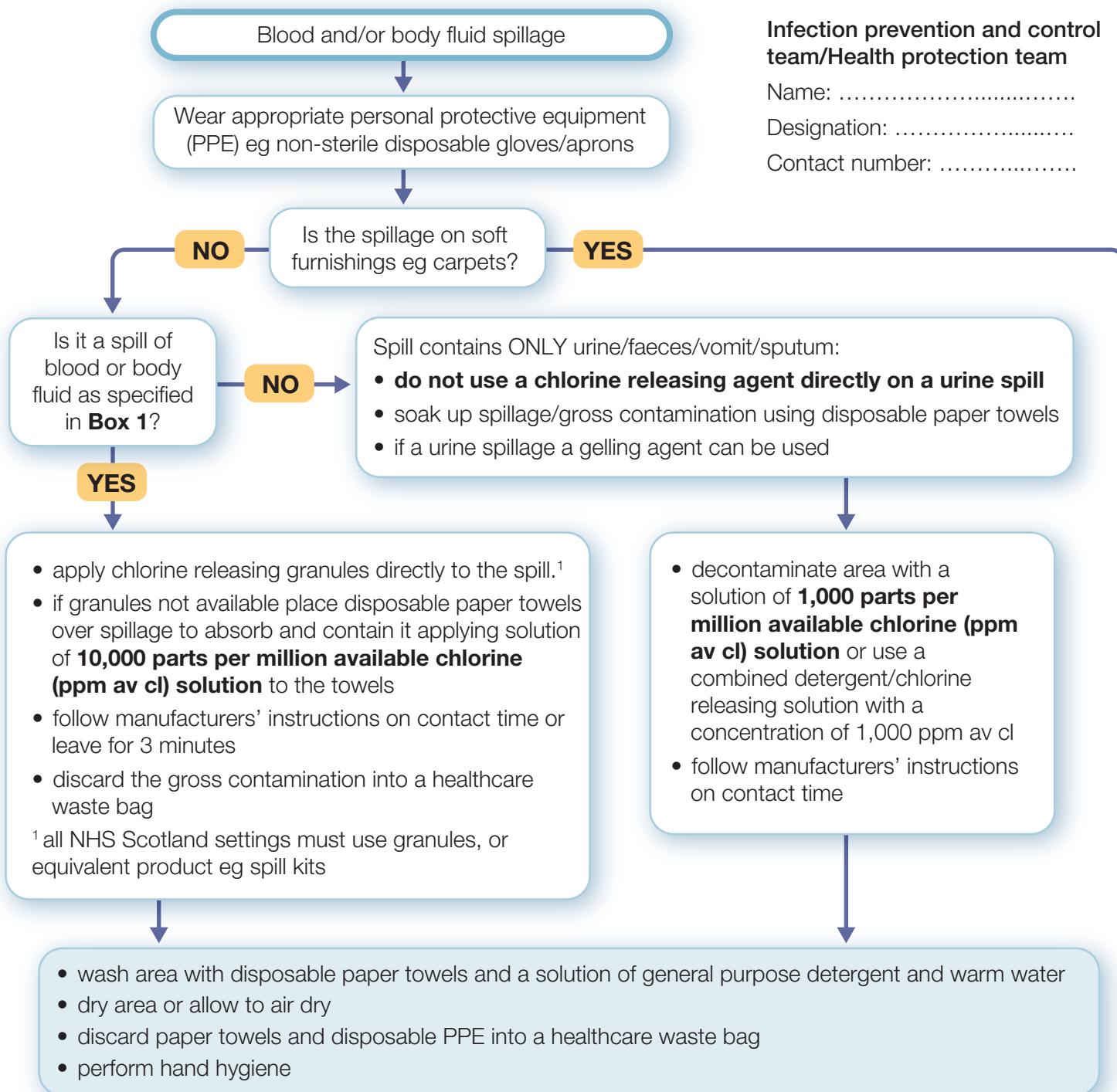
Best Practice: management of blood and body fluid spillages

Infection prevention and control team/Health protection team

Name:

Designation:

Contact number:



Box 1

- cerebrospinal fluid
- peritoneal fluid
- pleural fluid
- synovial fluid
- amniotic fluid
- semen
- vaginal secretions
- breast milk
- any other body fluid with visible blood (excluding urine)

Discuss with IPCT and consider:

- if furnishing is heavily contaminated you may have to discard it
- if the furnishing can withstand a chlorine releasing solution then follow appropriate procedure for the type of spill
- if it is safe to clean with detergent alone then follow appropriate procedure
- if it is not safe to clean with detergent then the item should be discarded